

3
4 time
Key of C

(62)

Irving Berlin

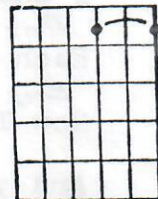
What'll I Do ?

Intro - C / Am7 / Dm / G7 /

^C
Gone is the/^{C/G}romance that/^Fwas so di'vine
'Tis/^Cbroken and/^{*Dm7}cannot be/^{C, G7}mended /
^C
You must go/^{C/G}your way and/^EI must go/^Amine
But/^Enow that our/^{B7}love dreams have/^{E, G7}ended

* Dm7 b5

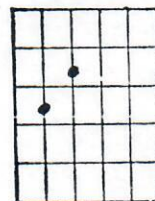
x x



What'll I/^Cdo when/^{Dm7}you are/^Cfar a/^{Dm7}way
And/^CI am/^{G7}blue, what'll I/^Cdo /
What'll I/^{Dm7}do when/^CI am/^{Dm7}wondering/^{Dm7}who
Is/^Ckissing/^{G7}you, what'll I/^Cdo / ^{C7}
What'll I/^Fdo with/^{Dm}just a/^Fphotograph
To/^Ctell my/^{A7}troubles/^{D7}to / ^{G7}
When I'm a/^Clone with/^{Dm7}only/^Cdreams of/^{Dm7}you
That/^Cwon't come/^{G7}true, what'll I/^Cdo / /

^C
Do you re/^{C/G}member a/^Fnight filled with/^Fbliss
The/^Cmoonlight was/^{Dm7}softly desc/^{C, G7}ending /
^C
Your lips and/^{C/G}my lips were/^Etied with a/^Akiss
A/^Ekiss with an/^{B7}unhappy/^{E, G7}ending

Cmaj7



Chorus - (end with Cmaj7 after the C)